

WEBER STATE UNIVERSITY



WEBER STATE WILDCAT ATHLETICS



Weber State University sponsors 15 NCAA athletic teams. The Wildcats are charter members of the Big Sky Conference, having been members of the Big Sky since the league's inception in 1962.

Weber State sponsors eight women's sports: basketball, volleyball, soccer, tennis, golf, cross country, indoor track and field, and outdoor track and field. There are seven men's sports: basketball, football, tennis, golf, cross country, indoor track and field, and outdoor track and field.

The 2006-07 season saw many highlights for the Weber State athletic department. The Wildcats won four Big Sky team championships during the season. The men's basketball team, under first-year head coach Randy Rahe, captured the conference title and the post-season tournament. They also advanced to the NCAA Tournament for the 14th time in school history. Senior David Patten was named the Big Sky MVP, becoming just the fifth Wildcat to ever receive the honor.

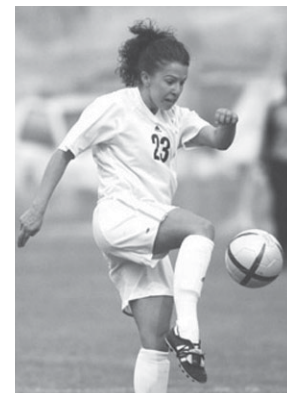
The Weber State men's and women's cross country teams both captured the conference title during the season and the women's team competed at the NCAA Championships. Junior Seth Pilkington also won All-American honors for the men's team.

The women's indoor track and field team also won the Big Sky Championship in 2007. Senior Lindsey Anderson won five Big Sky events in indoor and outdoor track and earned All-American honors twice during the year.

Weber State competed in all 13 Big Sky Championships during the 2006-07 season, one of just two schools to accomplish that feat during the season.

A total of 72 Wildcat athletes earned Big Sky All-Conference honors during the season and five earned All-American honors. Weber State also excelled off the court as well as 121 athletes were named to the Big Sky All-Conference Academic Teams in 2006-07.

Weber State was the winner of the first two Sterling Savings Bank Big Sky Conference Presidents Cup trophies, an award that recognizes a combination of academic and athletic achievement. The 'Cats won the Cup in 2003 and 2004, and finished in third place in 2007.



THIS IS... WEBER

Weber State offers more than 215 degree programs...the most comprehensive undergraduate offering in the state of Utah. Weber State has campuses in Ogden and Layton and offers stimulating educational challenges, but is small enough to care about the welfare of its 18,000 students.



Weber State is one of the top undergraduate universities in the country. Students at Weber State get extra attention from full-time professors who teach classes. Three out of four courses offered at Weber State have fewer than 30 students.



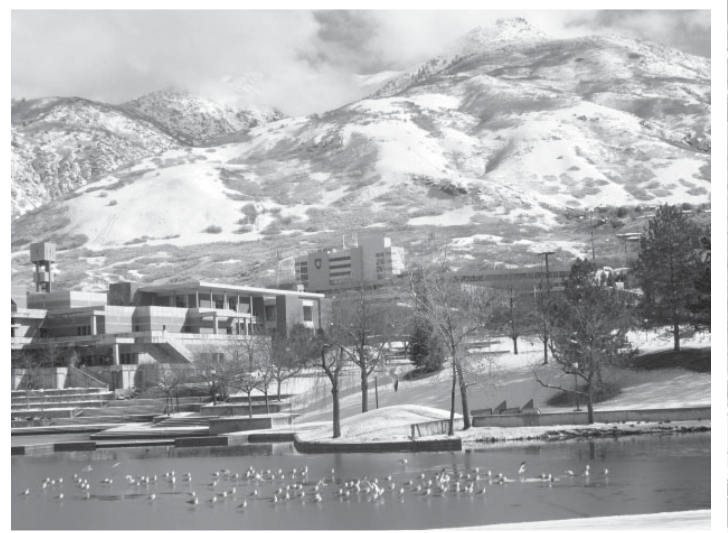
Weber State has students from all 50 states and from over 40 different countries around the world. Weber State University prides itself in being a diverse college campus. There are approximately 18,000 full and part-time students at Weber State.



The new University Village, built in 2002, is located on the south edge of campus and across the street from the Dee Events Center. The University Village offers students modern living quarters. A shuttle takes students to campus throughout the day.

STATE UNIVERSITY

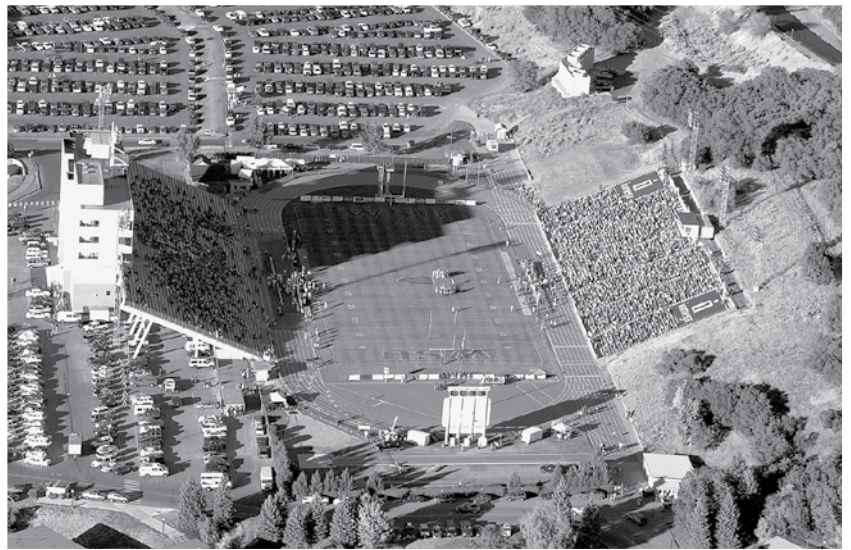
Weber State was founded as Weber Stake Academy on January 7, 1889 by the Weber Stake Board of Education of the Church of Jesus Christ of Latter-day Saints. In 1933 the Utah Legislature established Weber as a junior college. The school became a four-year institution in 1963. The enrollment that year was 4,675. The name was officially changed to Weber State College in 1963. In January 1990 the Legislature upgraded the school making it Weber State University.



The C. William and Bernice Stromberg Weight Training Center is nearly 6,000 square feet. The room is designed with emphasis on free weight training and is carpeted with purple AstroTurf and is glass enclosed with a view of the Wasatch Mountains to the north and east.



Elizabeth Dee Shaw Stewart Stadium is the home to Weber State football, outdoor track and field, and the athletic department offices, and hosts a variety of campus and community events throughout the year. The stadium is located on the east hillside above campus and overlooking the city of Ogden. The new Sky Suites and Press Box complex opened in 2001 and is six stories high with 26 luxury suites and a large press area.



DEE EVENTS CENTER

The beautiful Dee Events Center is a building of many uses including the home for the Weber State men's and women's basketball teams. All season the Dee Events Center will be celebrating its 30th anniversary. Ground breaking ceremonies on the forty-three acre site were conducted on March 21, 1975. Dedication ceremonies were held on November 1, 1977, a little more than two and half years after construction was started.

The Dee Events Center can accommodate more than 12,000 spectators in chair-backed seats, half of which are cushioned, and accented in red to compliment the WSU school colors of royal purple and white. The Wildcat Volleyball and basketball teams also have offices around the concourse of the building.

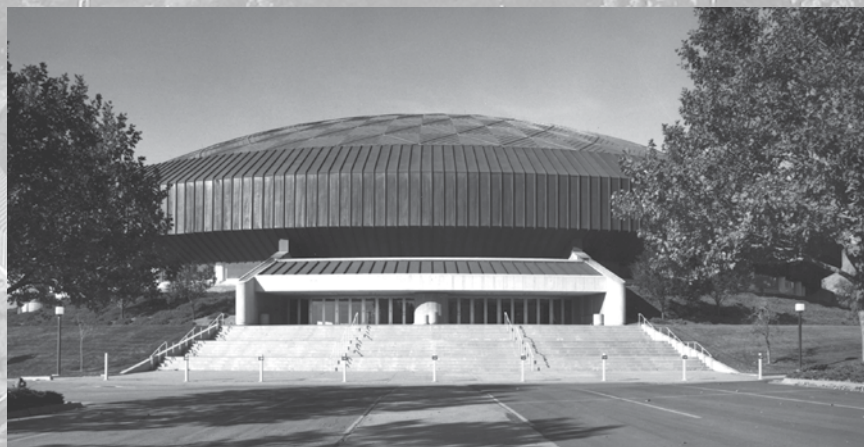
The building was built at a cost of 11.3 million dollars and represents the combined efforts and cooperation of students, university and community member for the development of a functional events facility for the greater Ogden and Weber County area. In addition

to those funds provided through student fees and revenue bonds, more than \$5 million dollars was raised from private sources in a variety of memorialization programs. The highlight of the fund drive was the contribution of more than \$2 million dollars from the Lawrence T. Dee and Donnell B. Stewart families.

The Dee Events Center itself has been on national display, hosting the annual NCAA Tournament on four different occasions. In 1980, the center hosted the First and Second Rounds. In 1983 it served as the West Regional Final Site with North Carolina State defeating Virginia, 62-61, to advance to and eventually win the NCAA Final Four. In 1986 the Dee Events Center was once again the site of the First and Second Rounds of the NCAA Championship. That year Louisville won a pair of games in the Dee Events Center on their way to the national title. The building was host again to the NCAA First and Second Rounds in 1994. The arena has also been the home to seven Big Sky men's basketball tournaments and two women's tournaments. The Utah Jazz have played 12 NBA preseason games at the DEC.

The Dee Events Center is not just an athletic facility. The arena also hosts the University graduation each year as well as a variety of campus, religious, and community events.

The DEC has also been the home of many concerts and other performances throughout the years. Alabama, Bill Cosby, Fleetwood Mac, Barry Manilow, The Beach Boys, Chris LeDoux, Collin Raye,



Clint Black, David Lee Murphy, LeAnn Rimes, Sawyer Brown and the New York Philharmonic are some of the performers to come to the Dee Events Center. Over the years, the arena has been the site of a circus, tennis and wrestling matches, gatherings by religious groups, high school basketball championships. Neil Armstrong, Gordon B. Hinckley, Jon M. Huntsman and Christopher Reeve are just a few of the luminaries who have spoken at the facility.



WILDCAT ADMINISTRATION

DR. F. ANN MILLNER

President, Weber State University



Dr. F. Ann Millner became the 11th president of Weber State University in 2002, after 20 years of serving the university as an educator and administrator. Before becoming president, she was vice president of University Relations, a position she assumed in 1993. Previously, she served as associate dean of continuing education and assistant vice president for community partnerships. She is the current chair of the Utah Campus Compact and a board member for Intermountain Health Care, the Ogden/Weber Chamber, and the Weber Economic Development Corporation, as well as other local, state and national organizations.

President Millner earned her doctorate at Brigham Young University in Higher Education Leadership. She received her master's degree from Southwest Texas State University in Health Education and Management and her bachelor's degree in Education from the University of Tennessee.

Her message to the communities Weber State serves is about its excellent teaching, extraordinary commitment to meeting the needs of students at every stage of life and ongoing service to the community -- a mission that changes lives in profound and lasting ways.

NORM TARBOX

Weber State Vice-President for Administrative Services



Dr. Norm Tarbox is Weber State's Vice-President for Administrative Services. He came to Weber State on May 17, 2002. The WSU Athletic Department comes under the umbrella of Administrative Services.

Tarbox is a native of Taylorsville, Utah and graduated from Cottonwood High School. He attended Snow College where he played on the baseball team. Tarbox graduated from Brigham Young University with a B.A. degree in Communication where he was named "Outstanding Student" of the Communication Department in 1986. He later obtained an MBA from BYU. He went on to earn an ED. D. in Education (Educational Leadership and Policy) from the University of Utah.

Dr. Tarbox came to Weber State from the Utah State Board of Regents where he worked in various capacities for six years. He served as the Assistant Commissioner for Student Financial Aid for one year. He was then named Assistant Commissioner for Finance and Facilities where he served for three years before being elevated to Associate Commissioner for Finance and Facilities.

He began his career in 1989 as a budget analyst for the Utah System of Higher Education and also worked as the business affairs officer and manager of research and administration. From 1993-96 he worked in the governor's office as a budget and planning analyst.

Tarbox's wife, Maurie, is a Weber State student who recently completed her associate's degree and is working on her bachelor's. She and their four children have performed in the Utah Musical Theatre productions at Weber State.

DR. MOLLY SMITH

NCAA Faculty Representative



Dr. Molly Smith is in her fifth year serving as the NCAA Faculty Representative for Weber State athletics. Dr. Smith is a Professor of Human Performance in the Department of Health Promotion and Human Performance at Weber State. She serves as the liaison between the athletic department and the University. She is involved in all aspects of national and conference legislation and decision making in the NCAA and the Big Sky Conference.

Dr. Smith is a native of Missouri and she received her undergraduate degree from the University of Missouri in Kinesiology. She later obtained a masters's degree from the University of Arizona and a Ph. D. from the University of New Mexico. Dr. Smith has published numerous papers and made many presentations in the areas of Kinesiology, Exercise Physiology, and Life-Style Management. She has been a member of the Weber State faculty for the past 17 years.

Prior to coming to Weber State, Dr. Smith served on the faculties at Fort Hays State and at the University of Missouri-Kansas City. When not teaching in the classroom, she can be found on the many trails in and around the Ogden area with her two dogs Sidney and Charm.

WILDCAT ADMINISTRATION

JERRY GRAYBEAL

Weber State Athletic Director



Jerry Graybeal was named Athletic Director at Weber State University in September 2005, after a national search of 45 candidates. Prior to being named AD Graybeal served as Interim Athletic Director since April 2005 and was the Special Assistant to the Athletic Director prior to that.

Graybeal is very familiar to Weber State athletics and the Big Sky Conference, with more than 25 years of experience in the Big Sky as an educator, coach and administrator. He served as head football coach at Weber State from 1998-2004, compiling a career record of 32-46 overall and 20-33 in Big Sky Conference games. He was named Big Sky Coach of the Year for the 2003 season after leading the Wildcats to a 8-4 overall record and 4-3 in Big Sky play. His first season with the 'Cats he had a 6-5 record which included a Homecoming victory over nationally ranked Montana. In 2000 the Wildcats went 7-4, and finished tied for second in the conference with a 5-3 record.

Prior to coming to Weber State, Graybeal served as assistant football coach at Eastern Washington University in Cheney, Washington from 1982-1997. He coached defensive backs from 1982-1996 and coached the linebackers in 1997. In 1988 he was named Defensive Coordinator and continued in that capacity through the 1997 season.

Graybeal was born October 12, 1955 in Hermiston, Oregon. He graduated from Walla Walla High School in 1974 and attended Walla Walla Community College for two years, earning an Associate's degree. Graybeal attended Idaho State University and played cornerback for two seasons. He earned his Bachelor's degree in Education at Eastern Washington in 1981 and taught P.E. classes at EWU while serving as assistant football coach.

Jerry is the father of a 15 year-old daughter, Josie. He and his wife Diane are the parents of a son Reiss, age 5, and daughter Macy McKenna, age 2.

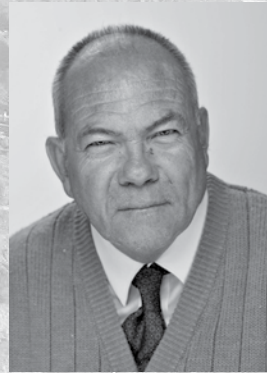
WILDCAT ADMINISTRATION AND STAFF



BETH BASS
Secretary II



JOEL BASS
Head Athletic Trainer



EARL BULLOCK
Asst. Equipment Manager



WENDY COMPTON
Asst. AD, Compliance



KELLY COOPER
Compliance Coordinator



VIVIAN DONALDSON
Assistant Wildcat
Club Director



PAUL GRUA
Asst. Media Relations
Director/VB Contact



AMY HAWKINS
Secretary II



DARIN HOGGE
Asst. Media Relations
Director/Website Manager



ERIC HOHN
Strength and
Conditioning Coach



BEN HUPPI
Assistant Director,
Marketing & Promotions



BRAD LARSEN
Assistant AD,
Media Relations



KERRI ROBINSON
Insurance Coordinator/
Secretary II



SANDY ROBINSON
Manger, Financial &
Administrative Services



BECKY THOMPSON
Wildcat Club Director



KIM TURNER
Assistant AD,
Marketing & Promotions



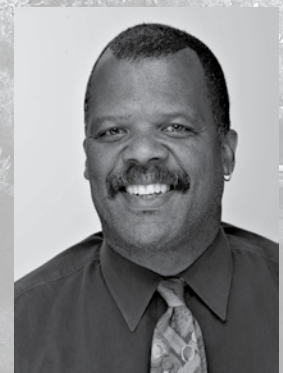
BERNICE WALTON
Secretary



NANCY WEIR
Women's Basketball
and Volleyball Trainer



SUMMER WILLIS
Spirit Squad Advisor



KORLA WOODS
Manager,
Academic Services

THE BIG SKY CONFERENCE

The Big Sky Conference will enter its 45th year of athletic competition in 2007-08. The Big Sky is an NCAA Division I member in all sports, with member institutions classified as FCS in football. Last season marked the addition of Northern Colorado University, bringing the total number of teams in the conference to nine. The Big Sky's membership includes Eastern Washington, Idaho State, Montana, Montana State, Northern Arizona, Portland State, Sacramento State, and Weber State.

The Big Sky Conference member institutions are located in eight states that span from the Pacific Ocean to the Rocky Mountains and from the Canadian to the Mexican borders. The entire West Coast is now represented by the Big Sky with members in Washington, Oregon and California, and of the eight western-most states in the contiguous United States, only one (Nevada) does not contain a Big Sky member. League members can be found in Arizona, California, Colorado, Idaho, Montana, Oregon, Utah and Washington.



The Big Sky Conference was established with six charter members - Idaho, Idaho State, Gonzaga, Montana, Montana State, and Weber State. On July 1, 1970 the league experienced its first expansion, adding Boise State and Northern Arizona to the fold to create an eight-member league. On July 1, 1979, charter-member Gonzaga left the league and was replaced by the University of Nevada. In 1987, Eastern Washington was admitted to the league to create the first version of a nine-member Big Sky Conference. Nevada's departure in 1992 moved the league to eight members until July 1, 1996, when both Boise State and Idaho left the Big Sky. At that time Cal State Northridge, Portland State, and Sacramento State were added to the league. Cal State Northridge left the conference in 2001. The addition of Northern Colorado this season brings the total back to nine.

The Big Sky sponsors championships in 14 sports including men's and women's cross country, basketball, tennis, indoor track and field, and outdoor track and field, in addition to football and women's volleyball, golf and soccer.

The 2007-08 athletic season also marks the 20th year in which the Big Sky Conference will sponsor championships in women's sports. The former Mountain West Conference existed from 1982-88, sponsoring championships for women's sports at the same institutions the Big Sky had men's programs. The Big Sky merged with the Mountain West in 1988, forming one league for both men's and women's sports.

The name **BIG SKY** originated in a novel written in 1947 by the late A.B. (Bud) Guthrie of Great Falls, Montana entitled *The Big Sky*. Jack Hollowell, former Montana Advertising Director, promoted the Big Sky theme for the Treasure State, and Harry Missildine of the Spokane *Spokesman-Review* called for the new league to be named the "Big Sky Conference" in his column dated Feb. 20, 1963. Five days later, on Feb. 25, the name Big Sky was adopted by the six presidents of the newly formed league.

Doug Fullerton, the fifth commissioner of the Big Sky Conference, will enter his 14th year at the helm of the league. Fullerton took over on July 1, 1995, replacing longtime commissioner Ron Stephenson, who retired after 14 years in the position. The first commissioner of the Big Sky was Jack Friel, who served from the league's inception until 1971. After Friel, John Roning directed the conference for six years until 1977 when Steve Belko assumed the commissioner's role and was with the league for four years.



Doug Fullerton
Commissioner



Jon Kasper
Asst. Commissioner
for Media Relations



Ron Loghry
Associate
Commissioner



Jayne Nadolski
Asst. Commissioner
for Compliance



Autumn Wehr
Information Director/
WBB Media Contact